



# NoCo Places Fact Sheet

NoCo Places collaborates to protect and conserve natural and cultural resources while providing equitable access and a quality recreation experience for current and future generations.



**Challenge:** Increased population, overcrowding, and visitor conflict.



**Challenge:** Limiting expansion of recreation into preserved areas, high impact on ecosystems



**Challenge:** Increase in human-wildlife conflict and impact on habitat.

## Goals\*

**NoCo will protect and conserve natural and cultural/heritage resources in the NoCo region by:**

- Inspiring an outdoor stewardship ethic among visitors and recreationists
- Building community support for increased funding for public land management and exploring opportunities for sharing financial resources across jurisdictions
- Increasing the amount of conserved and/or restored land and protecting land already conserved or protected
- Supporting outdoor recreation and visitation in areas best suited for that activity

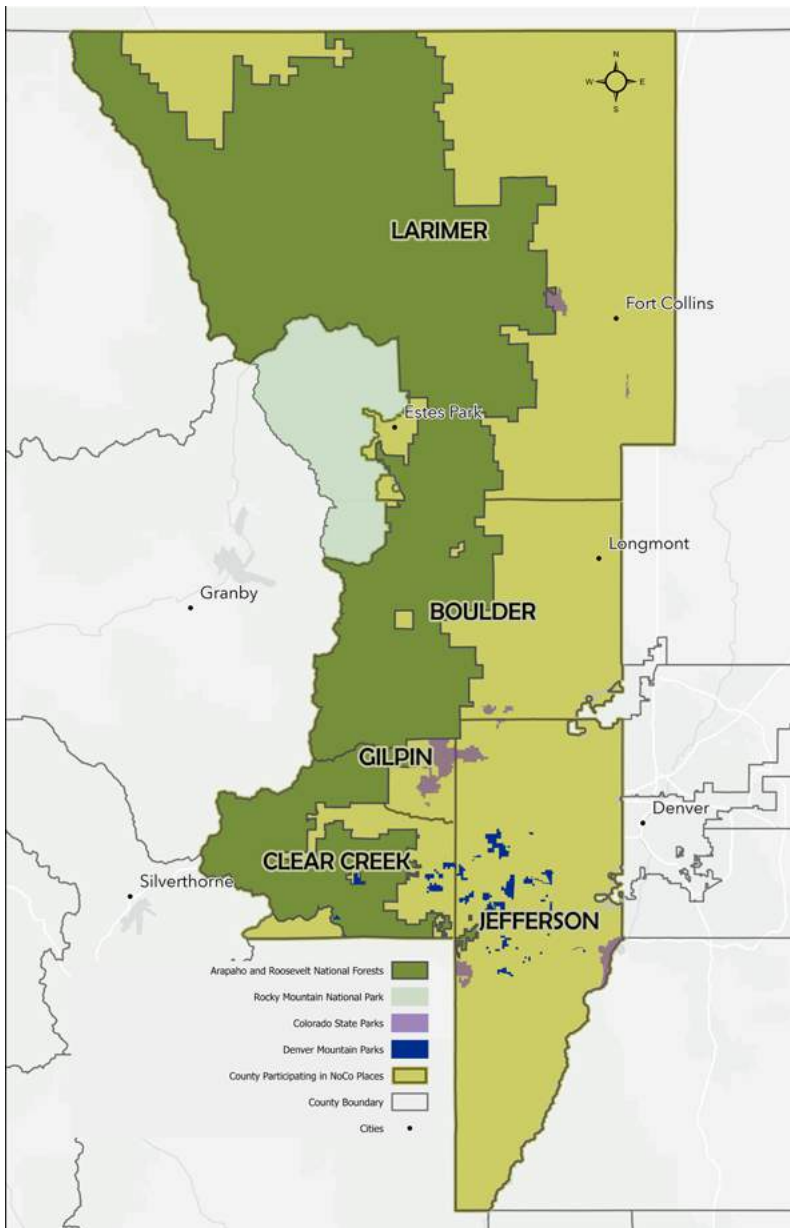
**NoCo will provide equitable access and a quality recreational experience to residents and visitors by:**

- Improving the quality of the visitor experience through management approaches, education, more effective infrastructure, and other means
- Ensuring that the region continues to provide and support a wide range of quality outdoor experience opportunities
- Welcoming and encouraging participation by underrepresented communities and by those with accessibility challenges
- Reducing conflict and promoting compatibility among visitors and recreational use types and increasing the safety of outdoor experiences

\*See website for unabbreviated list of goals



## Area of Focus



## Agency Partners

- National Park Service, Rocky Mountain National Park
- U.S. Forest Service, Arapaho and Roosevelt National Forests and Pawnee National Grassland
- Colorado Parks & Wildlife, Northeast Region
- Boulder County
- Clear Creek County
- Denver Mountain Parks
- Gilpin County
- Jefferson County
- Larimer County

